

Technical specification of:

Pirate ship



this image is an example

I.E. PARK S.r.l.

Via Don P. Borghi 3

42043 Praticello di Gattatico REGGIO EMILIA - ITALY

phone +39-0522-678526 - fax +39-0522-678750

e-mail: sales@iepark.com - website: www.iepark.com

Rev.09-18

Index

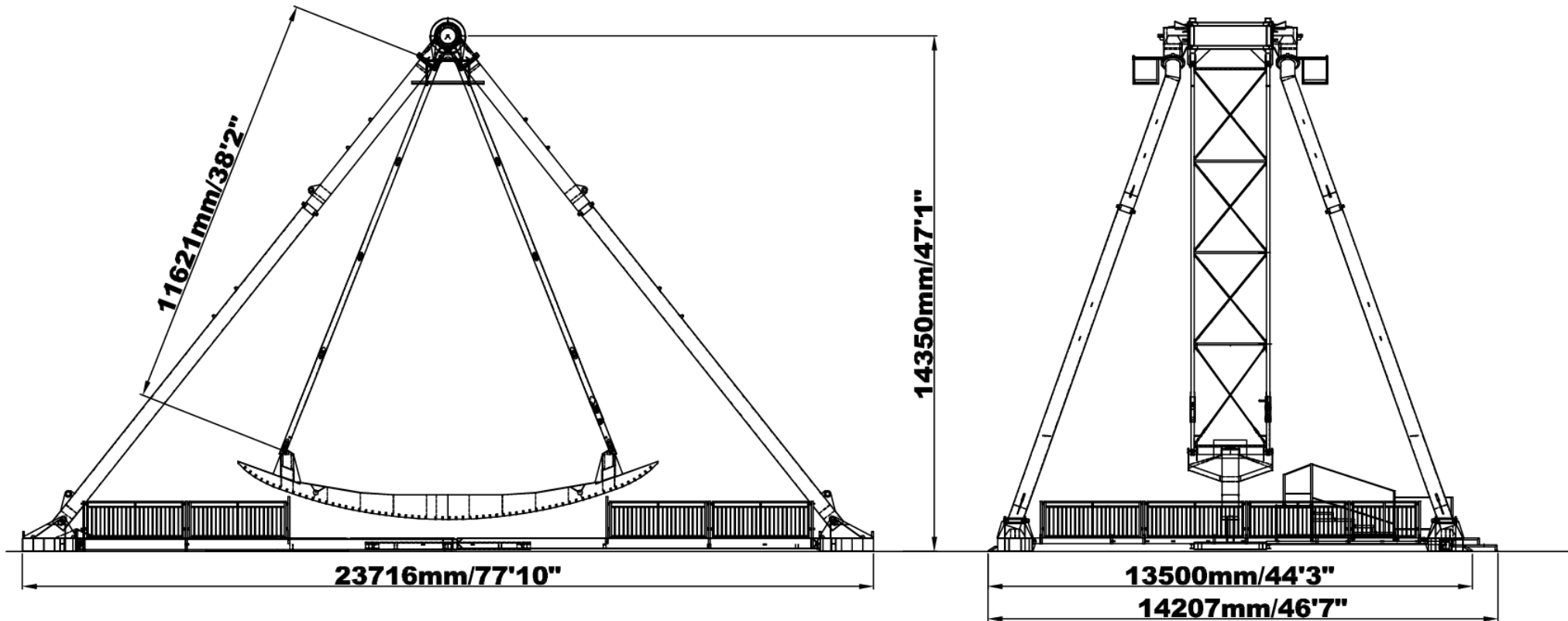
	page
<u>Technical Data</u>	<u>3</u>
<u>Foundation</u>	<u>4</u>

The gondola, shaped as a large boat, accommodates between 45 and 63 passengers and swings them up to 20m in height at a 75° angle.

The boat consists of a welded iron structure with decorative cladding and benches made of fibreglass reinforced plastics, allowing countless theming variants.

The ride can feature highly-decorative theming.

Technical Data



TECHNICAL DATA

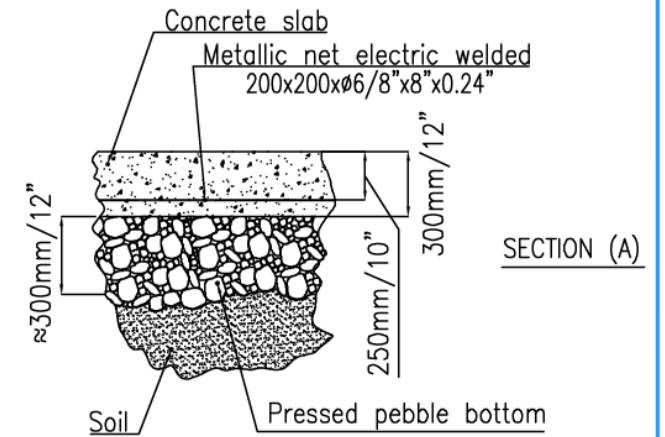
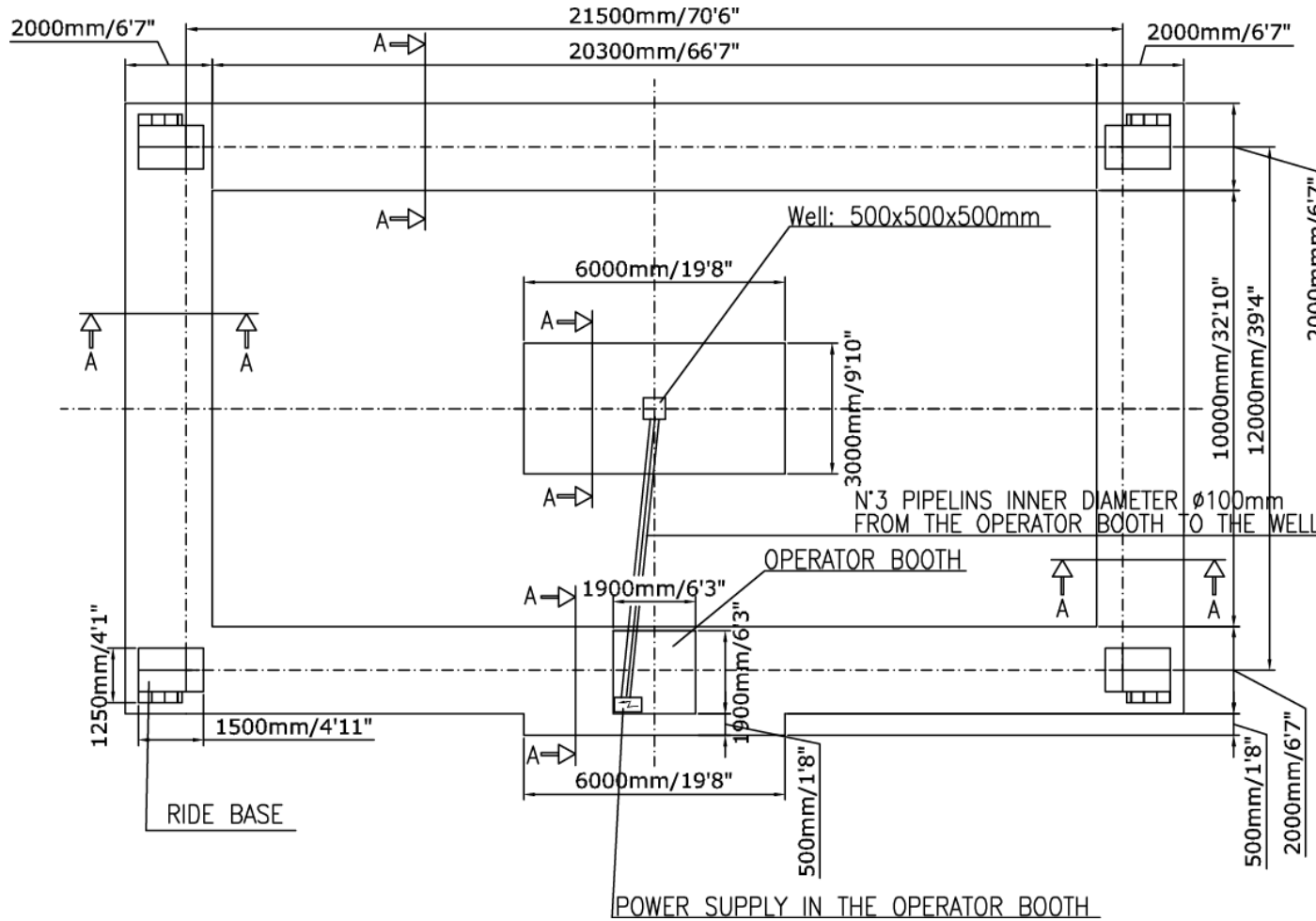
Weight	254 kN/25.9 t (full load 288kN/29.3 t)
Maximum angular oscillation	75°
Total capacity	45 adults or 63 children
Hourly capacity	Approx. 1800 passengers
Width in full swing	Approx. 26m/ 85ft
Height in full swing	Approx. 20m/ 65ft
Shipping volume	2x40'ot+1x40' fr
Boarding	Simultaneous

ELECTRICAL DATA

Voltage	3phase + neutral + earth (230/400/415 V)
Frequency	50/60 Hz
Motive power	75 kW
Lighting	12 kW
Control	Automatic/Manual

Passengers age/height restrictions: Minimum admissible age 10 years old and height 140 cm - Unaccompanied

Foundation



FLOOR LEVEL TOLERANCE= \pm 20mm